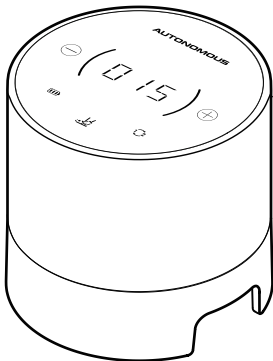


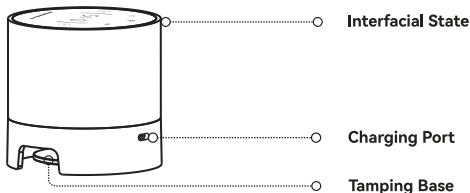
ELECTRONIC COFFEE TAMPER INSTRUCTIONS



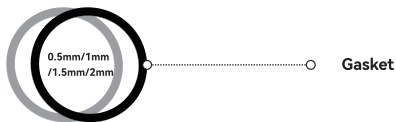
Product specifications are subject to change without prior notice.

Actual product may differ from the pictures shown.

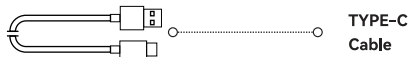
① Electronic Coffee Tamper



② Gasket



③ TYPE-C Cable



④ Cleaning Brush



⑤ Instructions

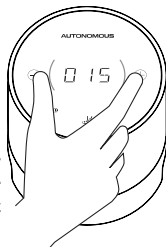
1) Turn on /Turn off

① Turn on

- ⚠ Note:** To preserve battery life, the tamper enters Sleep Mode. To turn it on for the first time, either plug in the charger and use Method 1 to activate it, or use Method 2 directly to power it on.

Method 1: Press and hold both ⊖ and ⊕ buttons for 0.5 seconds, the display will light up, show the current level setting, and enter standby mode.

Method 2: When powered off, insert and rotate the portafilter to lock it. The device will power on, the display will light up, and one tamp will be performed at the preset pressure level.



② Turn off

In the powered-on state, press and hold both ⊖ and ⊕ for 1 second. The display will turn off, completing the power-off process.

③ Auto power off

In the powered-on state, the device will automatically power off after 5 minutes of inactivity to preserve battery life.

2) Pressure Adjustment

① Pressure Adjustment

In the powered-on state, press and hold \ominus or \oplus for 3 seconds, the level indicator will flash, entering adjustment mode.

Press \ominus or \oplus again to adjust the level. The level will lock if there is no operation within 3 seconds.



② Level Range

The minimum pressure level is 13 & the maximum is 20kg.

3) Profile Selection

In the powered-on state, press and hold P-1 button for 3 seconds to switch between Profile P-1 and P-2. If no further operation is performed within 2 seconds, the display will automatically return to the preset level.

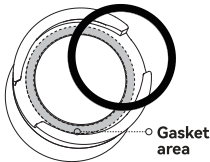
P-1: Tamps once

P-2: Tamps twice consecutively

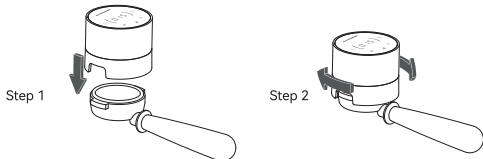
4) Operation Steps

- This device must be used with a portafilter

The gaskets are available in thicknesses of 0.5 mm, 1.0 mm, 1.5 mm, and 2.0 mm. Select the one that best matches the fit between the portafilter and the tamper. Apply the gasket to the designated area shown in the diagram to ensure a stable and tight fit.




As shown in the diagram below, the device will automatically power on when the tamper is inserted. The tamping base will tamp the coffee grounds according to the preset level and emit an operating sound. The progress indicator light will turn red during tamping and green when the process is complete.



When the operating sound stops, it indicates that the tamping base has returned to its original position and the tamping process is complete. Rotate the tamper in the opposite direction to remove it. Before using the product, please make sure that your filter baskets or portafilters are compatible with the Autonomous Tamper, or contact your local supplier to confirm. Using the automatic tamper with non-compatible portafilters or baskets does not indicate that the product is defective or should be considered as such.

5) Battery and Charging

① Battery Display

Press and hold the  button for 3 seconds. The display will flash and show the current battery percentage. After 2 seconds, it will automatically return to the preset level.

For example: If the display shows “95”, it means the battery is at 95%.

Low Battery Warning

When the device is powered on, the battery indicator and “LO” (LO means Low Battery) will flash alternately when the battery level falls below 30%, and the device should be charged promptly. To protect the battery, the device will automatically power off once the battery drops below 20%. It must be recharged before it can be powered on again.

② Charging Status

Charging Specifications: Input: 5V $\overline{\text{---}}$ 2A. Use a USB Type-C cable to charge the device.

Charging in the Powered-On State:



The level and battery percentage on the display will flash alternately; when the display shows “100”, it indicates that the battery is fully charged.

Charging in the Powered-Off State:

The display will show only the battery percentage. When the display shows “100”, it indicates that the battery is fully charged.

⚠ Note: To preserve battery life, it is recommended to charge the device at least once every 3 months if it is not used for an extended period.

6) Cleaning Function

In the powered-on state, press and hold \ominus or \oplus for 2 seconds to enter the level adjustment mode. Then, press and hold  for 1 second to extend the tamping base, allowing for cleaning. While this function is in use, other functions cannot be operated. Press and hold the \ominus or \oplus button for 2 seconds. The indicators for \ominus and \oplus will flash simultaneously. Then, press the  button for 1 second to retract the tamping base.

7) Delay Start Setting

- The delay time can be set from 0,0s to 3,0s.
- Once the delay is set, the device will wait for the specified time before tamping after the portafilter is inserted and locked in place.

In standby mode, press and hold both \oplus and III buttons simultaneously — the digital display will start flashing. Press the \oplus button to increase the delay time; press the \ominus button to decrease the delay time; the system will automatically return to the preset level after the display flashes four times.

8) Tamping Counter

In standby mode, press and hold \ominus and III simultaneously. The display will show the total number of tamps, in units of 100. The display range is 000–999, indicating a total of 0 to 99.900 tamps.

For example:

- A display of “001” indicates the total number of tamps is ≤ 100 ;
- A display of “011” indicates 1.000–1.100 tamps;

The display will flash twice and then automatically return to the preset level.

9) Operating Precautions and Battery Guidelines

To ensure safe operation and avoid potential hazards, please read and follow these guidelines carefully:

1. Do not immerse the device, power cable, or mains plug in water or any other liquid.
2. Do not flush the device directly with water.
3. Do not clean the device using a water jet or similar method.
4. Keep children away from the device at all times.
5. Prevent children from inserting objects into any openings of the device.
6. Keep hands and fingers away from the tamper base during operation to avoid injury.
7. Avoid using the device with a bottomless or a standard portafilter without a metal filter inside.
8. Do not open the device casing. If repairs are required, contact your authorized service partner.
 - Unauthorized repairs, incorrect installation, or improper operation will void all warranty and liability claims.
 - Only use replacement parts that meet original equipment specifications.
9. Place the device on a flat, stable surface to avoid the risk of it tipping over or falling.
10. Charging Specifications: Input: 5V $\overline{\text{---}}$ 2A. Use a USB Type-C cable for charging. Please use the correct charger to ensure safe and efficient charging.
11. Battery Maintenance Notice:

To maintain battery health and ensure warranty coverage:

 - The battery must be charged in a timely manner, even when the device is not in use.

- If the device is not used for an extended period, please charge it at least once every 3 months. It is recommended to charge the battery to 50–70% before storage.
- Avoid storing the device with a completely discharged battery, as this may cause damage not covered by the warranty.

10) Warranty Policy

This device is covered by a 2-year warranty for manufacturing defects under normal and recommended use, or up to 100,000 tapping cycles, whichever comes first.

This warranty does not cover damage caused by improper handling, unauthorized repairs, or failure to follow the Operating Precautions and Battery Guidelines as specified in Chapter 9 of this manual.



User Guide Video

Headquarter
Coffee lovers E.T.T.
16th street, 1A. industrial park
Ano Liosion, Athens, P.C.13342

www.autonomous.coffee

ELECTRONIC COFFEE TAMPER

Product model: T58 Pro

Battery information: Rechargeable lithium battery 2800mAh

Charging Specifications: Input 5V $\overline{=}$ 2A

Cable parameters: USB standard plug with TYPE-C charging port